

Franklyn James



Chart House, 6 Burrells Wharf Square, E14 3TN

£2,000 PCM

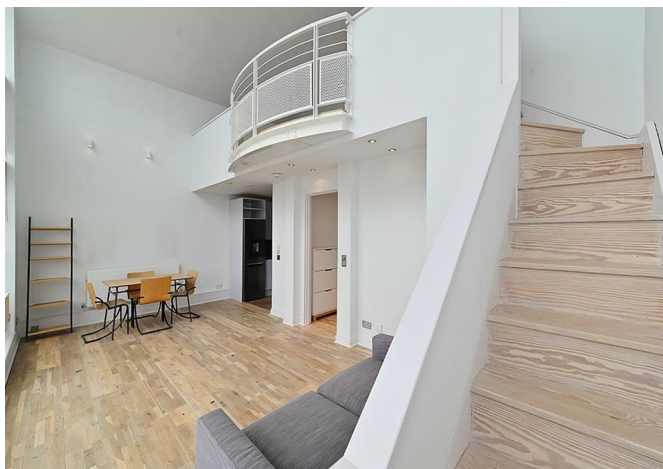


Chart House, 6 Burrells Wharf Square, E14 3TN

£2,000 PCM

Bright and spacious duplex apartment, with expansive river views to be enjoyed from a wide private balcony. The apartment boasts 6-meter-high ceilings, oak floors throughout, and is in immaculate condition. This property includes a share of freehold, exclusive underground parking, and onsite concierge service. It is next to the Masthouse Pier with swift boat service to central London, and near the DLR for fast access to Canary Wharf and the City. Situated on the third and fourth floors, the apartment comprises an ample reception area, an open plan kitchen with high quality integrated appliances, a contemporary four piece bathroom, and a master bedroom on the top level. Burrell's Wharf is a grade II listed development with an active community life, rare for most developments in the area. Historic grounds, the river, Mudchute Farm, the DLR, the Greenwich markets, all a short walk away.

Description

Situation

Furnished

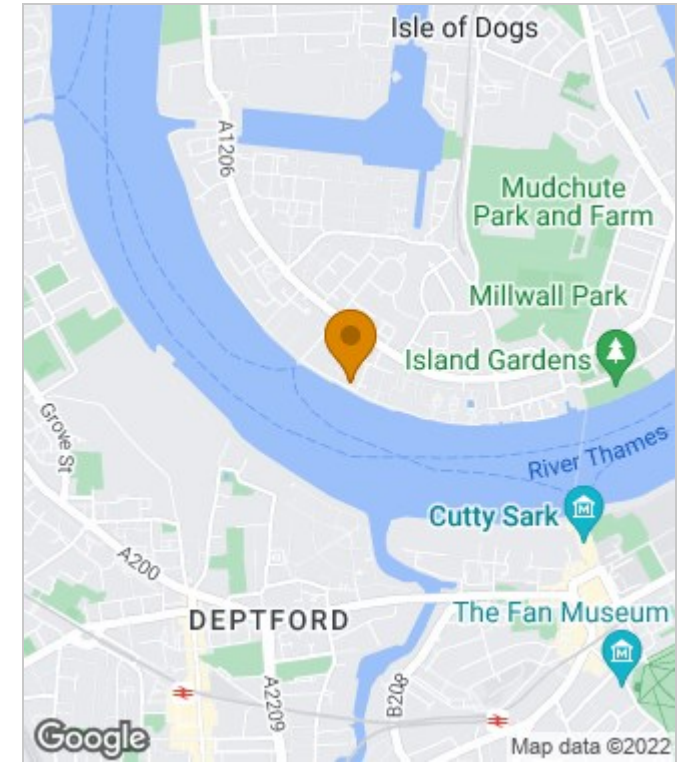
Council Tax Band:

Available: 6th December 2022

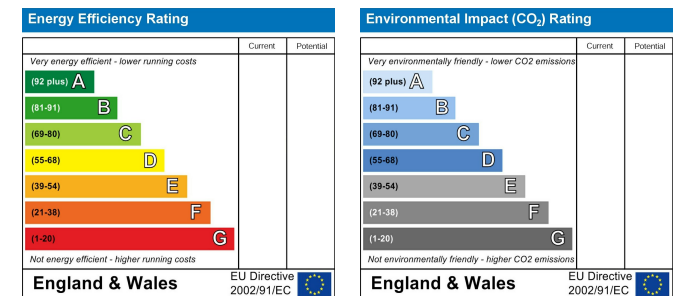




Area Map



Energy Performance Graph



These particulars, whilst believed to be accurate are set out as a general outline only for guidance and do not constitute any part of an offer or contract. Intending purchasers should not rely on them as statements of representation of fact, but must satisfy themselves by inspection or otherwise as to their accuracy. No person in this firm's employment has the authority to make or give any representation or warranty in respect of the property.

**Franklyn
James**

60 Westferry Road, London, E14 8JE
Tel: 02070056080 Email: lettings@franklynjames.co.uk <https://www.franklynjames.co.uk>